

Educational Horizons

NOVEMBER 2014

pobschools.org PLAINVIEW-OLD BETHPAGE CENTRAL SCHOOL DISTRICT

POBJFKHS Named One of the Best High Schools in the Country by *Newsweek*!



According to the National Center for Educational Statistics, there are approximately 24,544 secondary public schools in the United States.* Over those nearly 25,000, *Newsweek* recently named their top high schools in the nation for 2014. Plainview-Old Bethpage JFK High School was named the 104th best such school in the United States, putting it in the top one percent in the country! *Newsweek* stated that the “2014 Rankings highlight schools that do the absolute best job of preparing students for college. This year, [*Newsweek*’s] methodology is more stringent than ever with new measures of quality and a higher standard for data.” Congratulations to everyone in the District for helping earn this prestigious designation!

**As of 2011*

How New Devices and Programs Are Reshaping Our Curriculum POBJFKHS Students Among First in Nation to Experience *zSpace* 3D Displays

At an event held in early October, Plainview-Old Bethpage John F. Kennedy High School students were introduced to state-of-the-art, 3D *zSpace* displays. These revolutionary devices, which allow students to conduct projects and lessons in 3D, will enrich science, technology, engineering, and mathematics (STEM) learning. The Plainview-Old Bethpage School District is one of the few districts in the nation to have access to these tools, further demonstrating POB’s commitment to using the latest and most advanced technology to enhance education.

The *zSpace* tablets will eventually be available to all middle school and high school students. The displays’ 24-inch screen, which works in concert with 3D glasses and a stylus, allows students to access the many anatomy, physiology, engineering and design programs available. With this new technology, students can dissect virtual organisms and lift the organs right off of the screen. Other lessons include forces in motion, Newton’s Laws and electrical circuitry. The *zSpace* products will inspire students to think critically and creatively in preparation for the future. We can’t wait to see what discoveries our students can make with the help of these amazing devices.



Read more about other exciting new technologies on page 2.

SEE OUR SPECIAL BOND REFERENDUM SECTION ON PAGES 3-6



Plainview-Old Bethpage Central School District
Administrative Offices • Washington Avenue • Plainview, NY 11803
pobschools.org

Board of Education
Gary Bettan, *President*
Emily Schulman, *Vice President*
Debbie Bernstein • Seth Greenberg
Ginger Lieberman • Amy Pierno • Evy Rothman

Dr. Lorna R. Lewis, *Superintendent of Schools*

**** ECRWSS ****
POSTAL CUSTOMER
Plainview-Old Bethpage
Central School District

Non-Profit
Organization
U.S. Postage
PAID
Hicksville, N.Y.
Permit 156

Superintendent's Message

2014-2015: BUILDING FUTURES TOGETHER



Public education has been under attack from many fronts as there are those who would like to dismantle the very institution that has made our country great. The overarching goal of public education is to prepare the young men and women of today to become the leaders of tomorrow. It has been our insurance to bright futures for a nation of students who will transform the world. We opened our doors this year to 4,902 such students and are eager for you to read about their incredible accomplishments thus far this school year.

In choosing our theme for the year, Building Futures Together, we – the teachers, administrators, parents and community members – invite you to join us in investing in the education of our students, thus ensuring that our community prospers into the future. We build great futures when we provide an academically challenging and stimulating environment for all of our students, giving them wings to move confidently in their post-high school experiences. We are committed to offering an educational experience that remains on the cutting-edge, using all available programs, technologies and resources to augment curriculum.

Embedded in our mission statement is the notion of allowing each child to realize their full potential and become fulfilled, ethical and analytical citizens of the world. Ideals such as tolerance, acceptance, respect, honesty and kindness are totems of our District, not just for the students, but for every member of the Plainview-Old Bethpage community. We are charged to address each student's academic, social-emotional, aesthetic and physical needs and will do so with improved communication among students, teachers, parents, administrators and community members.

We are investing heavily in the future, as evidenced by our impending Bond Referendum. The vote, which will be held on December 9, is to allow us to fund a myriad of well-needed facility and classroom upgrades – improvements that will have numerous benefits for our students and the community. You have a right to know about every facet of this referendum. For more information on this referendum, click on the Bond link in the left column of the District web site at www.pobschools.org. If after reading this publication, you still have questions, please call our Assistant Superintendent of Business Ryan Ruf at (516) 434-3059.

We are excited about what lies ahead for the students of the Plainview-Old Bethpage School District, not only for this academic year, but for the future as well. The oft-repeated cliché contains an important truth: The children *are* our future. Let us work together to make sure it is a bright one.

Thank you for your continued support of our schools and the students we serve.

Dr. Lorna R. Lewis
Superintendent of Schools

Grant from Assemblyman Lavine Leads to Exciting New Program

Thanks to a generous grant by Assemblyman Charles Lavine, the POB School District was able to purchase a classroom set of tablets for each of the District's elementary buildings. These tablets have transformed the work occurring in these classes, as highlighted by our "kidsblogs" program.

Elementary teachers throughout POB have set up "kidsblogs" in their classrooms. At Parkway Elementary School, for example, children have two blogs set up for the 3rd and 4th grades. These blogs give the students an opportunity to discuss their readings and other school work. They can set up their own blog pages, create online avatars and comment on other students' blogs. While the blogs focus primarily on books, children can also blog about movies, videos and music.

Programs such as "kidsblogs" allow our students to have additional outlets in which to discuss and learn. They also prepare them for the future; blogging, of course, has become an increasingly important form of communication in the 21st Century. Thank you to Assemblyman Lavine for making this important new program a reality.

SPECIAL

Bond Referendum

SECTION

OCTOBER 2014

pobschools.org

PLAINVIEW-OLD BETHPAGE CENTRAL SCHOOL DISTRICT

2014 BOND REFERENDUM: MAINTAINING OUR STANDARDS OF EXCELLENCE AND INVESTING IN THE FUTURE.

Dear Community Member:

Over the past several months, the Board of Education has been working diligently with Central Administration, our architects, and the Bond Committee to prepare the scope and project list for this Bond Referendum. While doing so, we understood the need to balance the impact the Bond would have on our taxpayers with the need to invest in our aging facilities and infrastructure. On December 9, you, the voters of the Plainview-Old Bethpage community, will go to the polls to vote on a Bond Referendum. If approved, the Bond will address the areas in our aging schools that need repair or replacement, greatly improving District facilities, safety, and technology and simultaneously making our buildings more energy-efficient. Moreover, we are upgrading our security based upon consultation and recommendation from Homeland Security. These changes will transform our buildings and create a 21st-century learning environment for our students. We have put together this special addition to the Educational Horizons newsletter to provide you with the information you will need to make an informed voting decision. Over the next few pages, you'll be able to learn, in detail, exactly how the money being raised through this referendum would be used and the reasons why we are presenting a referendum at this time. For more information on the referendum, click on the Bond link in the left column of the district web site at www.pobschools.org. Please feel free to contact the Business office at 516-434-3050 if you have any further questions or concerns.

We appreciate all you do to help us provide the highest quality education to our children and thank you for your continued support of the Plainview Old Bethpage School District.

Sincerely,

The Plainview-Old Bethpage School District Board of Education

Why Do We Need a Bond Referendum?

The District's annual budgets have included funds for general facility maintenance, repair and capital projects. Even so, as our buildings age (our buildings range in age from 50 years to 65 years old), windows, ceilings, roofs, building systems and interior and exterior masonry age out and need replacement. Not moving forward with the projects proposed in this Bond Referendum will increase the likelihood that major building systems in many of our school buildings might fail, requiring "emergency" repair or replacement, which is far more expensive than undertaking these projects through a Bond issue. Additionally, the rapidly changing state of technology today requires that the District evaluate its technology capabilities and upgrade where necessary to maintain program excellence at all grade levels.



This Bond Referendum also includes security upgrades and enhancements at each of our District's facilities. The safety and security of your children, District teachers, staff and everyone who visits our schools is of paramount importance. We believe these security and safety measures are a critical aspect of this Bond Referendum.

Plainview-Old Bethpage is a school district with eight school buildings, one of the larger districts in Nassau County. The work being proposed is comprehensive and we believe commensurate with the size of our District, the ages of our buildings, and the curriculum, security and technology-driven projects proposed that help ensure we continue to deliver an award-winning, high-quality education to your children.

REMEMBER TO VOTE
Tuesday, December 9
6 a.m. - 9 p.m.

Bond Referendum Q&A

Before you go to the polls on December 9, you should be fully informed on every facet of the Bond Referendum. This Q&A is designed to answer any questions you may have and give you valuable insight as to why the District is holding a referendum at this time.

How were the projects chosen?

The projects included in this Bond Referendum were decided upon by the Board of Education based on the Buildings Condition Survey and only after input from the District's Facilities Referendum Advisory Committee, consisted of community members, members of District administration, teachers, PTA, staff members, business representatives, and District's architects and engineers. The committee engaged in walkthroughs and devoted many hours to a careful review of projects for each building, as well as considered programmatic districtwide needs. The committee's recommendations, which included most of the Priority 1 and 2 projects identified in the Buildings Condition Survey, were presented to the Board of Education at public meetings held during the months of September and October.

How long will it take to complete all the work proposed in this Bond Referendum?

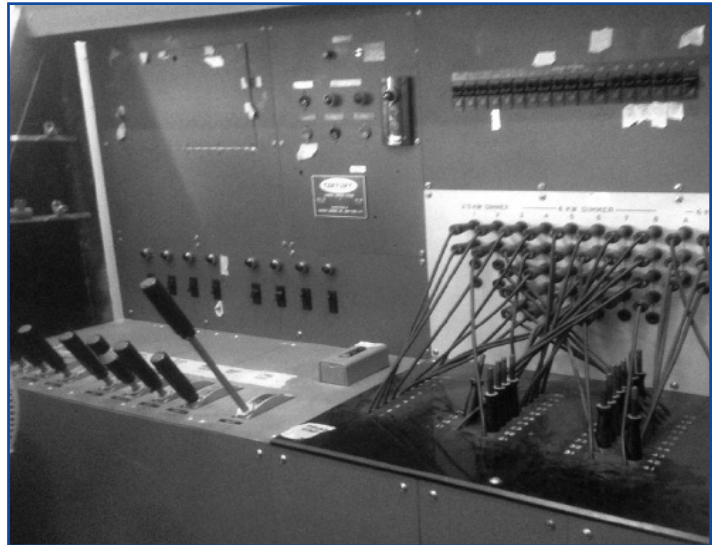
Work is expected to begin by the end of 2015. Final architectural plans must be completed, submitted and approved by the State Education Department, bid documents need to be developed and put out to bid, and contracts need to be awarded. The majority of the work should be completed by the summer of 2017.

What precautions will be taken during construction to ensure the safety of students, staff, parents and other visitors to our school buildings?

State Education Department (SED) guidelines must be adhered to when performing work within any school facility. All capital construction projects require a building permit issued by the SED. The importance of a building permit is to ensure that the work will be done properly to preserve the health and safety of a facility's occupants or users. SED requires permanent separation between all work areas and students. In addition, the District has retained the services of a construction manager who will be on site during all phases of major construction work.

All this work is considered essential. How do we get all this work done if the Bond Referendum is not approved?

If the Bond is not approved, the majority of the work proposed in this Bond Referendum will still be needed. The other way to pay for these projects will be to include them in the District's annual operating budgets as capital projects. With the tax levy limit limitation, accomplishing the work proposed in this referendum could take well over a decade. That would necessitate increased levels of maintenance to keep up with



Antiquated auditorium control board



Deteriorated exterior door



Original single-pane windows are energy inefficient

deteriorating conditions of projects that would have to be deferred into the future. It may also necessitate making reductions in other areas of annual budgets to remain within the state’s tax levy limit. Including these projects as part of a Bond allows this work to be done in an expedited manner while spreading the cost over many years and maximizing state-aid benefits.

How does the “New York Bonds for School Technology Act, Proposal 3,” which is on the November 4 ballot, impact the District’s Bond Referendum?

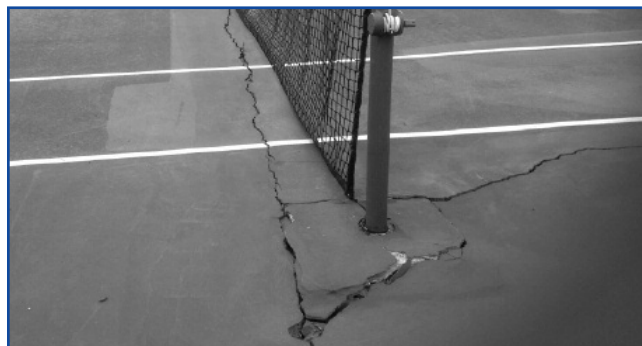
It is important to emphasize that these are two different referendums. The state referendum is related to the governor’s proposal to offer funds to districts across NY State for very specific technology initiatives. There will be no redundancy of projects or funding of projects. If the state’s “NY Bonds for School Technology Act, Proposal 3” passes, the District will remove from its Bond Referendum whatever POB technology projects are funded through the state’s initiative.

Will the work interfere with classes at any of our schools?

No. Class time will not be interrupted or cancelled due to construction. Work will be performed during summer vacations, weekends, holiday breaks and evening work shifts during the school year when interior spaces are unoccupied by students.



Original corridor ceilings need replacement

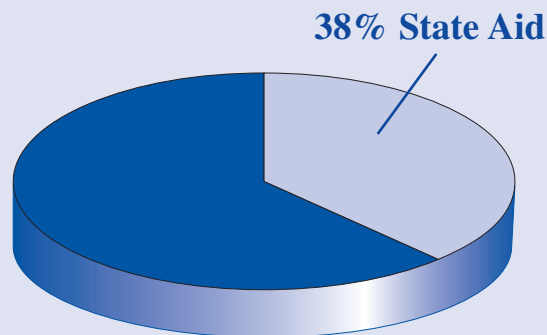


Deteriorated tennis courts need repair

Financial Information

What percentage of the overall Bond costs will be covered by state aid?

The District’s current state aid ratio is 38.3%. That means the District is reimbursed roughly 38% of every dollar that is spent on aidable projects. Based on the projects proposed in this referendum, the District’s architects estimate that over 90% of all projects proposed in this \$49,816,257 referendum are eligible for state aid.



For how many years will the District be paying off the costs of this Bond Referendum?

The District will be paying the bonds over a 20-year period. The bond market is very favorable right now, and the District anticipates that it will be similarly favorable when it does go out into the market after approval of this referendum. Additionally, the District’s AAA bond rating will prove advantageous in securing favorable interest rates.

What will be the annual cost* to the average homeowner in the POB School District?

For a home assessed at \$985 (the average home assessment in POB), the average cost of payment is approximately \$196 per year, which equates to \$16.33 per month.

What if final costs are less than anticipated and there is money left over in the Bond?

While the District’s architects have spent considerable time developing the construction budget, project expenditures could be less than the projected total Bond amount of \$49,816,257. If this occurs, the Board of Education could consider expanding on some of the projects included in the Bond (projects on the B List – see page 6) to avoid having to put these secondary projects into future-year budgets. If that situation should occur, the Board of Education will inform the community of possible additions to the Bond issue due to the projects coming under budget.

** All numbers are estimates based on current market conditions and aid ratios.*

What's Included in the Bond Referendum?

If approved, the 2014 Bond Referendum will enable the District to make upgrades to our classroom technology, building security, air conditioning and various facilities. Below is a list of all the projects included in this Bond Referendum. In the first list, A List (priorities), are the projects that the Board of Education has approved for inclusion in this Bond Referendum. The second list, B List, are projects to be included in the scope of the Bond Referendum only if the A List items are completed under budget.

A List (Priorities)

- Security: Technology, Lighting, Cameras, Motion Detection, PA
- Exterior Door, Interior Door, and Door Hardware Replacement
- ADA Accessibility Projects
- Fire Alarm System Upgrades
- Original Window Replacement (Energy Efficiencies)
- Roof Replacement
- Air Conditioning Projects
- Science Labs, Art Rooms, Bathroom and Additional Classrooms Reconstruction
- Interior and Exterior Masonry Reconstruction
- Heating and Ventilation Repairs and Upgrades
- Asbestos Floor Tile Replacement
- Lighting and Ceiling Replacement Projects (Energy Efficiencies)
- Large Group Instruction (LGI) and Auditorium Reconstruction Projects
- Information Technology (IT) Infrastructure Upgrades
- Electrical Upgrades (Including Solar Project)
- Tennis Courts and Site Improvements

B List

- Original Boiler Replacement Projects
- Parking Lot and Sidewalk Replacement Projects
- Generator Replacement Projects
- Locker Room Reconstruction
- Air Conditioning Projects
- Additional Classrooms
- Various Other Projects (Sound, Bleachers, Tile and Electric)

BOND REFERENDUM INFORMATION

Tuesday, December 9, 2014 • 6 a.m. - 9 p.m.

Jamaica Avenue School • Old Bethpage School • POB Middle School

VOTER INFORMATION

Voter Eligibility:

In order to vote, you must be a United States citizen, 18 years of age or older, and must have been a District resident for at least 30 days prior to the vote. Eligible voters include those who have voted in federal, state, county or school District elections within the past four years; those who are registered with the Nassau County Board of Elections; and residents who registered during the school District's registration period.

Absentee Ballot:

Applications for absentee ballots must be received by District Clerk Jeanne Tyler at (516) 434-3003 one week prior to the vote. If an absentee voter intends to pick up the ballot in person, that application must be filed with the District Clerk by 5 p.m. on the day of the vote. Persons designated by the Nassau County Board of Elections as "permanently disabled" will automatically receive an absentee ballot by mail.

Voter Registration Date:

Tuesday, December 2, 2014, noon to 9 p.m. at Jamaica Avenue School, Old Bethpage Elementary School and Plainview-Old Bethpage Middle School.

MUSIC AND ART NEWS

POBJFKHS Students Honored by LIAA

At the Long Island Art Alliance event held at Half Hollow Hills East High School, three POBJFKHS students were named scholar-artist winners. Amanda Schain was a winner in the category of Visual Arts, Arianna won in Media, and Crystal Kim in Music. Amanda, Arianna and Crystal earned this distinction among only 20 winners from more than 100 high schools on Long Island. See below for some photos from the event.



a collaboration with *Newsday* and the New York Community Bank Foundation. It was designed to find the “best of the best” student artists in the region. High school seniors are nominated by their school districts and only 10 each from Nassau and Suffolk receive the program’s highest award. In addition, LIU Post offers two scholarships to scholar artists who choose to study the arts at LIU.

The LIAA Scholar-Artist Program is one of the most exclusive and prestigious in the state. The program was founded in 2007 by Long Island school art administrators as

Congratulations to Amanda, Arianna and Crystal. Their accomplishments have made the Plainview-Old Bethpage School District proud.

POBJFKHS Students Receive National and Statewide Accolades

Each year, the National Association for Music Education holds its All-National Music Festival. Selection to this festival distinguishes a student as one of the finest musicians in the country. This year, the Plainview-Old Bethpage School District was honored to send four students, three as ensembles and one as an alternate, to the festival, which was held in Nashville in October. Congratulations to Nicole Brenner (voice), Emory Granat (voice alternate), Crystal Kim (cello) and Gabriel Salzman (trombone). The students were chosen based on their performances at the New York State School Music Association’s (NYSSMA) All-State Solo Festival.



In addition, POB recently announced that 23 students have been selected to perform in the annual New York State School Music Association’s (NYSSMA) All-State Music Conference in Rochester, NY. The conference, which will take place in early December, brings together 900 of the most talented student musicians from across the state. Selection to this festival is a considerable accomplishment; the 900 musicians came from a pool of applicants that exceeded 6,500 students.

“We are so excited and proud to be sending so many students to the events as prestigious as the All-National Music Festival and the All-State Conference,” said Plainview-Old Bethpage Superintendent Dr. Lorna

Lewis. “We encourage our students to be as dedicated and diligent in the arts as they are in the classroom, and we are thrilled that these talented students have been recognized for their hard work.”

The Plainview-Old Bethpage students chosen for this year’s All-State Music Conference are Alexandra Baker, David Baker, David Gallub, Amanda Goldstein, Emory Granat, Stephanie Handschu, Courtney Hedgecock, Ingoo Kang, Andrew Kim, Grace Kim, Jason Kimmel, Matthew Kurnit, Gyuri Lee, Jungmin Lee, Matthew Leo, Kristin Lunt, Andrew Miller, Alice Oh, Carly Schindler, Jessica Senzer, Michelle Shin, Natalie Towba and Athina Vroskou.

Selection into festivals such as the All-National festival and the All-State conference is a testament to the talent of POBJFKHS students and the quality of the District’s instruction. Congratulations to all of the students and their instructors.



Plainview-Old Bethpage Welcomes 17 New Hires

The newest members of the Plainview-Old Bethpage community. **(L-R) Standing:** Christopher Dorr, Jessica Maynard, Assistant Superintendent for Human Resources Dr. Vincent K. Mulieri, Ellen Feldman, Danielle Gioe, Stefani Angiulo, Aaron Marsh, Robert Lombardo, Mark Filippe and Kristina Speidall. **(L-R) Sitting:** Nancy Clabrese, Jill Greenblatt, Lauren Costa, Laura Bernhardt, Sue Miele, Alison Greenspon and Aaron Langenauer.

2015 Kindergarten Census!

Plainview-Old Bethpage Kindergarten Center
(516) 434-3479

Principal Karen Heitner • Assistant Principal Greg Scesney

INITIAL KINDERGARTEN CENSUS INFORMATION

ALL CHILDREN BORN IN THE YEAR 2010 ARE ELIGIBLE FOR KINDERGARTEN IN SEPTEMBER 2015. IN ORDER TO BE INCLUDED IN OUR REGISTRATION PROCESS, WHICH TYPICALLY BEGINS IN JANUARY, KINDLY VISIT

<http://www.pobschools.org/Domain/164>

AND CLICK ON THE 'KINDERGARTEN CENSUS FORM 2015-16' LINK IN THE RIGHT SIDEBAR TO COMPLETE THE CENSUS FORM AT YOUR EARLIEST CONVENIENCE.



School District Census Forms

To better plan for the future we need to get a clearer picture of our enrollment trends over the next decade. During the week of District Family Night, November 12th, 2014, we will be asking all residents to complete a school district census form. These forms will be mailed home during the first week of November and can be returned to the main office of any school or mailed to the district office referenced on the form. Your cooperation will help us wisely allocate resources to meet the changing enrollments.

 To learn more about the POB School District, please visit us at [Facebook.com/POBSchools](https://www.facebook.com/POBSchools)